



We are called to celebrate God's presence; Nurture the spiritual life of each individual; Carry the light of Jesus Christ to the world; and Serve God by serving others.

#### Inside this issue:

|                   |    |
|-------------------|----|
| Worship           | 2  |
| Church News       | 3  |
| Sharing Our Gifts | 5  |
| Children          | 6  |
| Youth             | 8  |
| Adults            | 9  |
| Events            | 10 |
| Calendar          | 11 |

# The Vision

February 2014

## Love vs. Isolation

Probably the most famous day within the month of February is Valentine's Day. In a way, it is the month of "love." As a Christian, I am entirely in favor of any efforts that praise and glorify expressions of love. Since God IS love, any praise of love is actually a praise of God. Christians have always been advocates of love.

In the first century, many Christians gathered as a kind of "burial society." In a culture where people commonly died in isolation and their bodies were left to rot on the streets, or be eaten by dogs, it was important to know that someone would care for your body in a respectful way after you died. Christians loved each other in this manner.

This concern for proper burials soon expanded to other concerns. For example, when horrific plagues spread through the civilized world, Christians responded differently than most folks. For non-Christians, the plagues were seen as curses sent by the gods to destroy those who had angered the gods. When a person began showing signs of the plague, that person was typically tossed out in the street and disowned. No one would associate with such a person for fear of absorbing some of the gods' displeasure upon themselves. Most plague victims died entirely alone, usually as a result of some form of dehydration.

Christians believed that Jesus walked among the lepers, the sick and lame, seeking to heal them. They believed that God loved all people, even those who were sick. So, they would offer basic nursing services to those who had the plague—food, water, hygiene, etc. As a result, Christians had a dramatically higher survival rate when plagues rolled through.

This is still true today. Faithful church-going Christians live significantly longer than others, and their happiness and quality of life are far better. The difference between Christians and non-Christians is not as pronounced as it was during the plagues, but it is still scientifically measurable.

The basic battle is between love and isolation. In our culture, the forces of isolation are always a threat. People do not communicate with others except through cell phones or other electronics. People feel that they do not need to worship God with others—they can worship all alone. People feel that they do not need to study the Bible or theology or church history with other humans—they can learn what they need from Wikipedia.

As Christians, our job is to fight against isolation in every form and to advocate for love. Gathering, talking, caring, nurturing—these are all done best in large groups. The church is God's gift to the world for the sake of God's beloved children. We should be overjoyed to offer this gift to our friends and neighbors.

Your brother in Christ,  
Scott



# Worship

---

## February Worship Schedule

**February 2** *Matthew 5:1-12* “Rejoicing in Persecutions” Today we begin a month-long series on the “Sermon on the Mount.” Why should those who are persecuted rejoice? What hope does Jesus give to those people who went out to hear him? How can we, today, lay claim to their hope? Today we will also share Holy Communion and we will include a mention of Scout Sunday.

**February 9** *Matthew 5:13-20* “Salty Light” To ancient Jews, salt was a preservative—it kept things from rotting. It had to be pure itself in order to do this. How do we function as salt, or as a light to the world? Do we hide our lights where no one else can see what we are doing? Or are we proud of our good deeds and willing to share them? How do we do this while remaining humble?

**February 16** *Matthew 5:21-37* “A Valentine Sermon” Jesus gives some principles for marriage and divorce. They seem, on the surface, to be rather stark. But, is there more to it than that? What does Jesus expect of us with regard to marriage? Today, we hope to celebrate a wedding during the worship service, though plans are not yet finalized.

**February 23** *Matthew 5:38-48* “How to Love Your Enemies” Jesus says it is easy to love your own family members, but if you want to be children of God, you have to love your enemies. What does loving one’s enemies look like? Where do we find the strength for that? Does God love only those who love God, or does God love God’s “enemies?”

---

## Home Communion

If you are unable to attend church and would like to have communion brought to you at home, please notify your deacon or the church office at 447-1520.

---



## February Opportunities

If you are able to host Coffee Fellowship, please contact [Lisa Aulerich-Marciniak](#)  
For flower contributions, please contact the [RPC Office](#)  
Potential Acolytes and Liturgists, please contact [Elizabeth Musick](#)



|             | Liturgists       | Acolytes | Ushers   | Flowers          | Coffee Fellowship |
|-------------|------------------|----------|--|------------------|-------------------|
| February 2  | Tony Miezio      | Scouts   | Scouts   | OPEN             | Scouts            |
| February 9  | Youth            | OPEN     | Michael & Roberta Gates<br>Jim Ulrich, Andrew Kiwiet | Elizabeth Musick | Choir             |
| February 16 | Dennis Zander    | OPEN     | Mike & Gwen Heine<br>Jim & Lisa Marciniak            | Paula McCracken  | OPEN              |
| February 23 | Elizabeth Musick | OPEN     | Jon & Deb Jansky<br>Scuff Gross, Marilyn Slanec      | OPEN             | OPEN              |

## Session Highlights

In January, the Session:

- ◆ re-elected Fred Kitch as Church Treasurer and Mary Ann Sadilek as Clerk of Session;
- ◆ appointed Roberta Gates and Dennis Zander to the Endowment Committee;
- ◆ authorized the celebration of the Lord's Supper for the first Sunday of each month as well as Ash Wednesday and Maundy Thursday. Rev. Jansen was also authorized to officiate at home communions at his discretion;
- ◆ approved the annual statistical report to be sent to PC(USA);
- ◆ decided to replace the current inscription panel in the Rose Window with a plaque to be installed near the window, which will include the original dedication, history of the window, and the re-dedication information;
- ◆ called a special Session meeting on March 15 to examine and receive the confirmands;
- ◆ approved the sale of a columbarium space to the non-member parents of a member;
- ◆ accepted the gracious offer of the Jansky family to purchase decorative cherub figurines for the niche above the columbarium;
- ◆ approved 7:00 p.m. as the new starting time for Session meetings;
- ◆ removed Dodi, Ron, Alexandria and Dylan Krug and Shannon Buhle from the rolls at their request;
- ◆ noted that the financial deficit would be significantly reduced if every member paid their Per Capita assessment of \$31.18;
- ◆ continued a discussion on how to restructure the preschool into RPC and reported on the process of preparing a document to address questions of chain of command, and oversight of finances and personnel.

Mary Ann Sadilek  
Clerk of Session

---

## February Birthdays



|                   |     |                    |      |                         |      |
|-------------------|-----|--------------------|------|-------------------------|------|
| Beverly Aieta     | 2/1 | Dana Halline       | 2/11 | Lisa Aulerich-Marciniak | 2/22 |
| Natalie Pike      | 2/1 | Gonzo Schexnayder  | 2/11 | Lisa Carlson            | 2/22 |
| Edith Wakely      | 2/1 | Kevin Tamlyn       | 2/11 | Curtis Linder           | 2/22 |
| Nancy Dvorak      | 2/3 | Reagan Tamlyn      | 2/11 | Glenna Linder           | 2/22 |
| Nancy Jensen      | 2/3 | Christopher Ulrich | 2/11 | Dana Jensen             | 2/23 |
| Katherine Pike    | 2/5 | Devin Zander       | 2/11 | Ruth Svestka            | 2/23 |
| Meg Carlson       | 2/6 | Jaden Zander       | 2/11 | Claire Staubus          | 2/24 |
| Dan Gregus        | 2/6 | Kemp Clarke        | 2/15 | Jack Jurgens            | 2/26 |
| Frank Wright      | 2/6 | Richard George     | 2/17 | Mbougueng Meuyou        | 2/26 |
| Christopher McCoy | 2/9 | Danielle Wolff     | 2/18 | Jamie Cermak            | 2/27 |
| Kathryn Nadkarni  | 2/9 | Brian Wolff        | 2/20 | Cora Schander           | 2/28 |
|                   |     | Eric Wolff         | 2/20 |                         |      |



## Church Officers

Thanks to all who agreed to serve as church officers during 2014. Elders, deacons, and trustees are listed below. The letters following the deacon names below correspond to the first letter of your last name. In the coming weeks, your deacon will be contacting you to say hello and see how you are doing. Be sure to let your deacon know if you have any special needs, such as rides to church, home communion, illness in the family, etc.

---

## Elders

### 2014

Richard & Mary Crang  
Hollie Miezio  
Lynda Nadkarni  
Mary Ann Sadilek  
Joyce Van Cura  
Dennis Zander

### 2015

Mike Aieta  
Diane Chaney  
Bill Muller  
Elizabeth Musick  
Paige Rambeaux  
Stan Schade  
Youth Elders: Lily Lisle and Stuart Marciniak

### 2016

Roberta Gates  
Susan Lynch  
Lisa Aulerich-Marciniak  
Scott Schwarz  
Laura Vanags  
Susanne Vogel

## Deacons

### 2014

Jeanine Buttimer (Hi-Ka)  
Ellen Hamilton (Kb-Li)  
David Harper (Bp-Ce)  
John Haugland (Lj-Me)  
Gwen Heine (Mf-Ne)  
Stephen Marcus (Nf-Pe)

### 2015

Nancy Dvorak (Pf-R)  
Frank Gangware (Sa-Se)  
Sandra Kappmeyer (Sf-Sm)  
Susan Lisle (Sn-T)  
Deb Pike (U-Wa)  
Steve Teune (Wb-Z)

### 2016

Kathy Feary (A-Bo)  
Andrew Kiwiet (Cf-Cy)  
Donna Mitchell (D-Fl)  
Marilyn Slanec (Fm-G)  
Sally Sloane (Ha-Hh)

Youth Deacons: Hannah Pecis and Keri Burke

## Trustees

### 2014

Jonathan Jansky  
Jim Marciniak  
Fred Mitchell  
Hank Vogel

### 2015

Lou Heine  
George Meyer  
Dennis Sadilek  
Caroline Tecson

### 2016

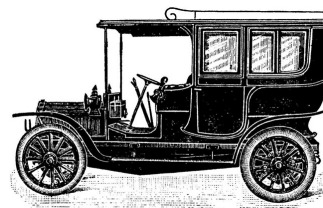
Susan Dluhy  
Cyril Friend  
Gerald Olson  
David Schade

Youth Trustee: Joseph Aieta

---

## Need a Ride to Church?

Do you need a ride to church? Do you know someone who does? Deacons love to get to know members better by providing rides to and from the Sunday service. Please contact either Frank Gangware or David Harper and one of them will find a super deacon drive for you.



### RPC Committees

The following RPC members have agreed to share their time and talents on various RPC Committees. Are you interested in assisting with one of these committees? Please contact the chairpersons listed below to offer *your* time and talents.

Adult Christian Education  
Children and Youth Programs  
Fellowship  
Finance  
Membership  
Nominating  
Personnel  
Stewardship  
Worship and Music  
Liaison to “external” groups

Richard & Mary Crang  
Hollie Miezio, Lynda Nadkarni, Stuart Marciniak  
Lisa Aulerich-Marciniak, Susan Lynch, Lily Lisle  
Roberta Gates, Michael Aieta, Stanley Schade  
Paige Rambeaux  
Bill Muller, Mary Ann Sadilek  
Diane Chaney  
Scott Schwarz, Susanne Vogel, Dennis Zander  
Elizabeth Musick and Joyce Van Cura  
Laura Vanags

---

### CARERS Corner

Our donation for the month of February is canned foods of all kinds: meat, fish, veggies, fruit, etc. We will be delivering these to our local Riverside Food Pantry. We know you will continue to be generous, so we thank you in advance.



---

### Blankets +

Blankets + is a special mission opportunity to assist people in need around the world. Your contributions provide the means to transform lives and communities when they are faced with an emergency or simply struggling to put food on the table. For 65 years, Church World Service has worked in partnership with local communities to identify their needs and access the resources they need to build the foundation for a more viable future, including:

- ◆ Blankets, tents, food and other emergency supplies in the wake of a disaster;
- ◆ Tools and seeds for refugees returning home to replant their fields;
- ◆ Wells for families living in drought-prone areas to provide clean, safe water to drink and to irrigate crops and gardens;
- ◆ Literacy training and microcredit for women struggling to feed their families.

Thank you for your contributions. Checks should be made out to Riverside Presbyterian Church, and marked *Blankets+*.

---

### Worship at Cantata and Scottish Home

The deacons welcome any and all congregation members with talents in public speaking and/or music (or just plain helping) to join us in the worship service for the residents of Cantata (the British Home) on February 2 at 1:30 p.m., and the worship service for the residents of the Scottish Home on February 16 at 2:00 p.m.



### Finance Update

Year-to-date financial status at end of December (100% of the way through the year):

|               |                              |
|---------------|------------------------------|
| Receipts      | \$ 295,182 (89.6% of budget) |
| Disbursements | \$ 323,523 (98.2% of budget) |
| Deficit       | \$ 28,341                    |



*The Baptism of Jesus*  
James Tissot 1886-1894

**Jesus’ Baptism**

This month we will be studying the baptism of Jesus and the related temptation stories. Kids will have the chance to enact a baptism, use science experiments to ponder the meaning of it, create banners, make heart-shaped biscuits together and learn about the church history of baptism as they explore the accounts of Jesus’ baptism in each of the four gospels.



**February’s Memory Verse**

This is my Son, the Beloved, with whom I am well pleased. *Matthew 3:17*

**February Schedule**

|             |  |                  |                  |                  |
|-------------|--|------------------|------------------|------------------|
| February 2  | <i>Celebration Sunday: All grades meet in Social Hall for group activity</i> |                  |                  |                  |
| February 9  | Oasis Place  | Creation Station | Manse Kitchen    | Celestial Cinema |
| February 16 | Celestial Cinema   | Oasis Place      | Creation Station | Manse Kitchen    |
| February 23 | Manse Kitchen  | Celestial Cinema | Oasis Place      | Creation Station |

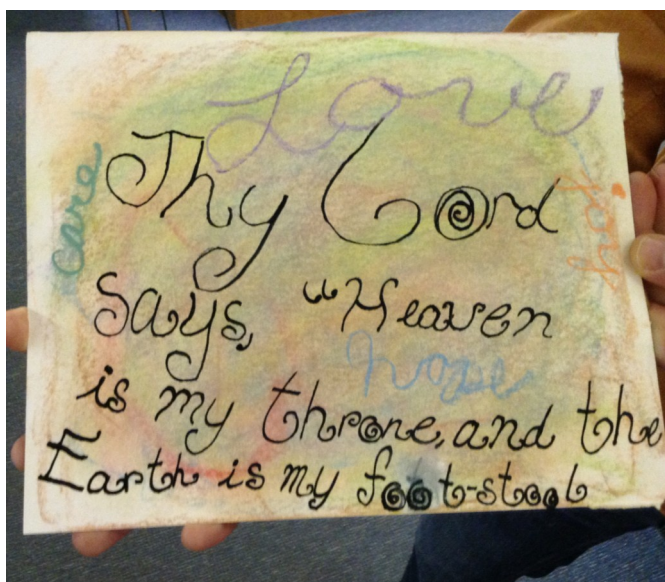


**Preschool**

February is all about the hearts. The children will be making gifts for their valentines along with exchanging valentines in the classroom. It's sure to be a special month.

Thank you all for saving your Campbell's soup labels. With your contributions the preschool was able to receive a karaoke machine along with extra microphones, which we used during our holiday show. The children so enjoyed having their 'moment' in the spotlight; it was so much fun. So please keep clipping—we can't wait to see what we can get next.





### Extra Fun in February: Special Prize Box Visits

This month ALL kids will have the opportunity to visit the Sunday School prize box. Each grade will have a Sunday in February when every child can pick something special from the prize box. The schedule is February 2: Kindergarten & 1<sup>st</sup> grade; February 9: 2<sup>nd</sup> and 3<sup>rd</sup> grade; February 16: 4<sup>th</sup> and 5<sup>th</sup> grade; February 23: 6<sup>th</sup>, 7<sup>th</sup> and 8<sup>th</sup> grades. **Happy Valentine's Day!**

## Youth

---

### Youth Group News

Here's what's coming up in February in Youth Group.

- Sunday February 2:** British Home Service—1:30 (Super Bowl Sunday)  
**Sunday February 9:** Etiquette Workshop (Also, we need a youth liturgist and acolyte)  
**Sunday February 16:** President's Day weekend—**no Youth Group**  
**Sunday February 23:** Service Project—to be determined

Friends are always welcome at Youth Group. If you have questions, please feel free to contact Tara at [taragregus@yahoo.com](mailto:taragregus@yahoo.com). We hope to see you!

---



The awesome kids in Teen Scene created personalized soup labels for cans of chicken soup which the RPC deacons will deliver when they visit folks in need of a spiritual lift.

### Teen Scene

High school students sophomore and older are invited to attend weekly classes on Sundays at 9:00 a.m. in the RPC Library.

### Scouts

On January 25, Pack 24 held its annual [Pinewood Derby](#) at RPC, a favorite event for cub scouts since 1953. Also in January, the boy scouts of Troop 24 went to Muskegon, Michigan to the 850-foot [luge](#) track at the Muskegon Sports Complex, an exhilarating experience for scouts and leaders.



The scouts' annual Pancake Breakfast will be held at RPC on Saturday, March 1. Tickets are available from any cub scout or boy scout.

February is the anniversary of the founding of the Boy Scouts of America in 1910. Riverside's scouting program began in 1917, making Troop 24 ninety-seven years old. RPC has sponsored the scouts since 1939, and our scouts appreciate the church's ongoing support.

### Pancakes

Can't wait for the Scout Pancake Breakfast on March 1? The Riverside Methodist Church is hosting an all-you-can-eat pancake breakfast on Saturday, February 1, from 8:00 a.m. to 1:00 p.m. at 82 Woodside Road (across from Hauser). Adults \$7, Preteens \$5, Children 5 and under are free. Call 708-447-1760 for tickets or more information.

## Presbyterian Women's Bible Study



2013-2014 Horizons Bible Study topic is *An Abiding Hope - The Presence of God in Exodus and Deuteronomy* by Janice Catron. The next meeting is **Wednesday, February 26**, at 10:00 a.m. in the Social Hall. All women are invited. Coffee is served.

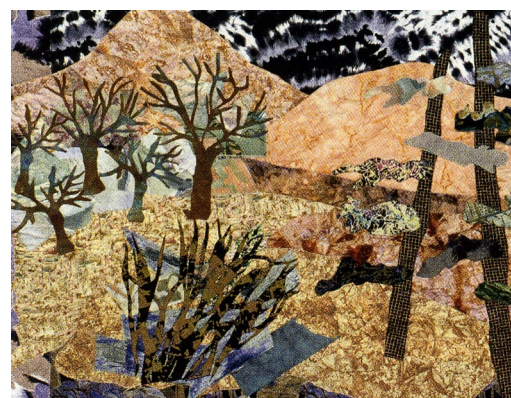
**Lesson 5:** God Provides

**Background Scripture:** *Exodus 15:22-18:27; 16:1-3, 13-15; 17:1-7; 18:12-24*

**Key Idea:** God provides faithfully for the people's physical, emotional, and spiritual needs in the wilderness. God still provides for the

church and the world through the combined efforts of all disciples. There is a Chinese proverb: "Give a [woman] a fish and [she] eats for one day. Teach a [woman] to fish and [she] eats for a lifetime."

Lesson leaders are Elizabeth Musick, Sylvia Schade and Joyce Van Cura. Sylvia will lead Lesson 5. Come and join this nice group of women.



*The Wilderness by Lee Porter*

The artist states, "What would it have been like to be recently liberated slaves in a desert wilderness with almost no water? I tried to emphasize the unpredictable quality of this wilderness experience through the irregular quilt shape and the images I chose."

## Human Scene

Join the **Human Scene** Sunday School class *every Sunday at 9:00 a.m. in the upstairs Parlor*. You will have a chance to explore scripture, theology, current events, mission projects, and your own spiritual journey.

February 2 — *Lloyd Bradbury, RPC and Bruce Jablonski, Director, People Care (Riverside)*

**Senior Resources I: Transport Services & Aids for Mobility**—How to arrange for transport services in the community and the use of personal aids for getting around. This presentation informs seniors, their families and their caretakers about the types of services and facilities that are often overlooked or not known in Riverside and the nearby communities and how to make best use of them.

February 9 — *Lloyd Bradbury, RPC*

**Senior Resources II: Helpful Devices for Seniors**—This presentation deals with personal aids that can extend the experiences of seniors including medical alerts, interactive equipment, individual mobility aids, electronic facilities and a number of others. Where to obtain them, how to use them, and the necessary training and support will be discussed.

February 16 — *Tracy Hough, Assoc. V.P. for Advancement, Pillars (LaGrange Park)*

**Pillars: Making Connections & Changing Lives in Your Community**—An overview of the services that Pillars provides in the western and southwestern suburbs, with an emphasis on those particular services that are available in the Riverside community including suggestions for ways that we can partner. Pillars' mission is to build healthier communities by making connections and changing lives. We build healthier communities by providing quality mental health services, social services, and education for people of all ages.

February 23 — *Dr. Gloria Khoshnood, Spiritual Assembly of the Baha'is of Oak Park*—**Introduction to the Baha'i Faith: Worldwide Religion**—The following questions will be answered — What is the Baha'i Faith and who are the members? What do Baha'is believe? What is their mission? Many of us have been to the Baha'i Temple in Wilmette, but few have had the opportunity to truly understand the nature of the Baha'i faith, its beauty and its relevance in today's world. Please join us for this illuminating presentation.

## Fellowship & Events

---

### Valentine Dinner & Games

Come celebrate the love we share! Join us, **Wednesday, February 12**, at 6:00 p.m. in the Social Hall for an all ages Valentine Dinner and Game Night! Everyone is invited to participate in this informal evening of food, fun, and fellowship.

Please bring ONE homemade Valentine to exchange, and, if you have one, a favorite game. After dinner we'll play a mix of board games and larger group activities.

Sign up or let the office know you are coming by Monday, February 10, so that we know how much food to prepare (a free will offering will be taken at dinner to help with expenses).



---

### Fellowship Committee Help Needed

Susan Lynch, Lily Lisle, and Lisa Aulerich-Marciniak, the new chairs of the Fellowship Committee, are in search of others to serve with them and provide opportunities for fun and meaningful social interaction for our church family and friends. If you are interested in working with others on fellowship events throughout the year, please speak with one of us to see what is involved.

---

Dear Caring Christmas Committee:

It was my pleasure a long time ago to do this fun job and help cheer our senior members as you have done.

Now it is my turn to learn how good it feels to know that our church family remembers all of us seniors even though we may no longer have the energy to engage in all the activities of our church.

So—thank you all. It was a pleasure to be surprised with all those goodies by our lovely Gale Teune—she has such a happy smile.

May you all have a very Happy and Healthy New Year.

Most sincerely,  
Sanlee Radigan

We would like to thank all of those who recently have supported us in thought and prayer as we grieve the loss of Keith Gibson, father of Beverly. Your kindness was greatly felt and appreciated. Thank you so much.

Sincerely,  
The Aieta family

On behalf of the Constance Morris House I would like to thank The CARERS and the congregation of the Riverside Presbyterian Church for all you did to make Christmas so special for our residents this year.

As you can imagine, our clients are not excited about spending the holidays in a shelter. Your generosity went a long way to help brighten an otherwise dark time in their lives.

We are so grateful to you for thinking of our clients during this holiday season. Thank you!

Jessica  
Community Outreach Coordinator

Please check the  
Website for the  
most recent  
calendar  
updates!



## February 2014

| Sun   | Mon   | Tue   | Wed   | Thu  | Fri  | Sat |
|---|---|---|---|--|--|-----|
|   |   |   |   |  |  | 1   |
| 2<br>9a Sunday School<br>10a Worship<br>11a Coffee Fellowship<br>1:30p Cantata Worship                        | 3<br>5:15p Volleyball<br>7p Stewardship<br>Comm Mtg                       | 4<br>6:30a Men's Forum<br>9:30a Staff Mtg<br>7p Personnel Comm<br>Mtg | 5<br>Office Closed<br>4:15p Singers<br>4:45p Ringers<br>6:30p Bell Choir<br>7:30p Chancel<br>Choir                                    | 6<br>6:30a Women's<br>Forum<br>7p Girls' Group<br>Meeting  | 7  | 8   |
| 9<br>9a Sunday School<br>10a Worship<br>11a Coffee Fellowship<br>11a Open Gym                                 | 10<br>5:15p Volleyball<br>7p Finance Comm<br>Mtg<br>7:30p Trustees<br>Mtg | 11<br>6:30a Men's Forum<br>9:30a Staff Mtg                            | 12<br>Office Closed<br>4:15p Singers<br>4:45p Ringers<br>6p Valentine<br>Dinner & Games<br>6:30p Bell Choir<br>7:30p Chancel<br>Choir | 13<br>6:30a Women's<br>Forum<br>7p Girls' Group<br>Meeting | 14<br> | 15  |
| 16<br>9a Sunday School<br>10a Worship<br>11a Coffee Fellowship<br>11a Open Gym<br>2p Scottish Home<br>Worship | 17<br>5:15p Volleyball  | 18<br>6:30a Men's Forum<br>9:30a Staff Mtg<br>7p Deacons Mtg          | 19<br>Office Closed<br>4:15p Singers<br>4:45p Ringers<br>6:30p Bell Choir<br>7p Session Mtg<br>7:30p Chancel<br>Choir                 | 20<br>6:30a Women's<br>Forum<br>7p Girls' Group<br>Meeting | 21<br>10a CARERS<br>Comm Mtg   | 22  |
| 23<br>9a Sunday School<br>10a Worship<br>11a Coffee Fellowship  | 24<br>5:15p Volleyball  | 25<br>6:30a Men's Forum<br>9:30a Staff Mtg                            | 26<br>Office Closed<br>10a Pres. Women<br>Bible Study<br>4:15p Singers<br>4:45p Ringers<br>6:30p Bell Choir<br>7:30p Chancel<br>Choir | 27<br>6:30a Women's<br>Forum<br>7p Girls' Group<br>Meeting | 28   |     |

**RIVERSIDE  
PRESBYTERIAN  
CHURCH**

116 Barrypoint Road  
Riverside, Illinois  
60546

Phone: 708-447-1520  
Fax: 708-447-1525  
Website: [www.rpcusa.org](http://www.rpcusa.org)

**"Where there is no vision, the people perish." — Proverbs 29:18**

Place mailing label here

**Riverside Presbyterian Church**

|                                   |  |
|-----------------------------------|--|
| <b>Pastor:</b>                    | Dr. Scott Jansen<br><a href="mailto:scott.jansen@comcast.net">scott.jansen@comcast.net</a>             |
| <b>Minister of Music:</b>         | Dr. Sally Sloane<br><a href="mailto:musikhse@comcast.net">musikhse@comcast.net</a>                     |
| <b>Director of</b>                | Jenny Kolinski   |
| <b>Christian Education:</b>       | <a href="mailto:kolinski426@comcast.net">kolinski426@comcast.net</a>                                   |
| <b>Administrative Assistants:</b> | Linda Hutcheson<br>Donna Jones<br><a href="mailto:rpcoffice@sbcglobal.net">rpcoffice@sbcglobal.net</a> |
| <b>Girls' Group Leader:</b>       | Michele Monroe-Clark<br><a href="mailto:mmc430@hotmail.com">mmc430@hotmail.com</a>                     |
| <b>Asst. Girls' Group Leader:</b> | Susan Zander   |
| <b>Senior &amp; Junior High</b>   | Tara Gregus  |
| <b>Youth Advisor:</b>             | <a href="mailto:taragregus@yahoo.com">taragregus@yahoo.com</a>   |
| <b>Building Supervisor:</b>       | Joel Hastings<br><a href="mailto:joelhastings@sbcglobal.net">joelhastings@sbcglobal.net</a>            |
| <b>Preschool Director:</b>        | Lisa Manganiello   |
| <b>Custodian:</b>                 | Krzysztof Gieron   |
| <b>Clerk of Session:</b>          | Mary Ann Sadilek<br><a href="mailto:MASDS@aol.com">MASDS@aol.com</a>                                   |
| <b>Deacons Moderators:</b>        | Frank Gangware<br>David Harper   |
| <b>Trustees President:</b>        | Jim Marciniak  |
| <b>Financial Secretary:</b>       | Cindy Reynolds<br><a href="mailto:financialsecretary@rpcusa.org">financialsecretary@rpcusa.org</a>     |
| <b>Asst. Financial Secretary:</b> | Robert Gates<br><a href="mailto:robmicgates73@gmail.com">robmicgates73@gmail.com</a>                   |
| <b>Treasurer:</b>                 | Alfred Kitch<br><a href="mailto:rpc_fred_kitch@sbcglobal.net">rpc_fred_kitch@sbcglobal.net</a>         |
| <b>Asst. Treasurer:</b>           | George Dluhy   |
| <b>Archivist:</b>                 | Caroline Tecson  |
| <b>Wedding Coordinator:</b>       | Donna Ulrich   |
| <b>Artist in Residence:</b>       | Karena Mendoza   |
| <b>Director of Music Emerita:</b> | Mary Ann Sadilek   |
| <b>Organist Emerita:</b>          | Arline Robbins   |



Riverside Presbyterian  
Church is a congregation of  
the Presbytery of Chicago  
(312) 243-8300. Presbyterian  
Church (U.S.A)



More information about the  
ministry and mission of Riverside  
Presbyterian Church is available  
by contacting any member of our  
church staff and by visiting our  
website: [www.rpcusa.org](http://www.rpcusa.org)

**Vision Editor/Webmaster:**  
Nancy Hopkins  
[RPCVisionEditor@sbcglobal.net](mailto:RPCVisionEditor@sbcglobal.net)