



We are called to celebrate God's presence; Nurture the spiritual life of each individual; Carry the light of Jesus Christ to the world; and Serve God by serving others.

#### Inside this issue:

Worship & Music	2
Church News	3
Sharing Our Gifts	4
Oktoberfest	5
Children	6
Youth	7
Preschool	7
Presbyterian Women	8
RPC Bells	8
Human Scene	9
Scouts	9
Events	10
Calendar	11

# The Vision

November 2016

## Liturgical Stoles



If I have a favorite stole, it is the stole created for Pentecost. Jeff Wunrow and I again worked together to create a stole that fit stylistically with the other stoles he designed, which meant including a rainbow. I did not want to incorporate doves in the stole since my stole for Ordinary time has doves. So flames seemed to be in order. Jeff was unsure how to incorporate a rainbow into a red Pentecost stole with flames.

Growing up my family always had a fireplace. I remember on special occasions my parents had special "logs" that when placed in the fire would produce colored flames. I always loved sitting by the fire and watching all the colorful flames. I shared that story with Jeff, and my Pentecost stole was born.

We celebrate Pentecost fifty days after Easter Day. Pentecost is based on the New Testament story from Acts where the Holy Spirit descended on the gathered believers. Those in observance saw the Spirit as flames. Some churches now claim that Pentecost is the birthday of the church.

A red stole, which represents the gift of the Spirit, is also worn for Ordinations and Installations of the clergy. At the service, we celebrate the calling of the Spirit on the individual. I also wear my red stole on Reformation Sunday, which is always the last Sunday of October.

*Dale*

# Worship

---

## Worship Notes

In November we continue our worship series *Outside My Own Little World*.

**November 6**—*1 Corinthians 12*, our theme is *Break My Heart for What Breaks Yours*. We need your images of what heals the world.

**November 13**—PLEDGE SUNDAY – *Romans 12*. Remember your pledge cards: Our theme is *I Wanna Be Reaching Out*.

**November 20**—CELEBRATION SUNDAY – *2 Corinthians*. Our theme is *Start Living Right Now*. We will also receive 5 new members into the life of the church and celebrate the Sacrament of Baptism. The music on this day is going to be AWESOME!

**November 27**—First Sunday of Advent begins our Worship Series based on the poem, *I Believe Even When*.

---

## Worship at Cantata and Scottish Home

The Deacons welcome any and all congregation members to join us in the worship service for the residents of Cantata (the British Home) on November 6 at 2:00 p.m., and the worship service for the residents of the Scottish Home on November 20 at 2:00 p.m.

---



## November Opportunities

If you are able to host Coffee Fellowship, please contact Deb Jansky  
For flower contributions, please contact the RPC Office  
Potential Acolytes and Liturgists, please contact Elizabeth Musick  
Potential Ushers, please contact Paula McCracken



	Liturgists	Ushers	Acolytes	Flowers	Coffee Fellowship
November 6	OPEN	Claire Gangware, David Schade, Ruth Svestka, Laura Vanags	Dessa Myers	Mary Ann Sadilek	OPEN
November 13	Susan Lynch	George and Susan Deems Dluhy Kemp Clarke, Tricia Willinger	OPEN	Ellen Hamilton	OPEN
November 20	Steve Teune	Bryan and Susan Zander Devin and Jaden Zander	Norah Lougachi	OPEN	Outreach Committee
November 27	OPEN	Cindy Reynolds, Patti Perry-Halline Haley Rayfield, Chance Rayfield	Jaden Zander	Jon & Deb Jansky	OPEN

## Session Notes

In October the Session:

- ♦ received Margaret and Justin Kreimes and Charles and Bridget Juister as new members, and approved the baptism of Harriet and Victor Juister;
- ♦ noted with sadness the death of Olga Cykner, age 103;
- ♦ approved exploring a relationship with a sister church in our Presbytery that is of a different culture or economic make-up than RPC;
- ♦ received a new Financial Operations Manual for review by elders prior to discussion and vote on its adoption in November;
- ♦ discussed the role of social media in promoting interest in RPC; other churches have had positive results using Facebook postings;
- ♦ received a list from Trustees of projects that will need to be done in the near future, including items such as painting the Sanctuary, a new roof for the Sanctuary, restoring the Good Shepherd window and a new kitchen floor.

Mary Ann Sadilek  
Clerk of Session



Carol O'Meara 11/1  
Eugene Pouliot 11/1  
Lorri Floros 11/2  
Ava Booton 11/3  
Michael Heine 11/3  
Ben Mitchell 11/3  
Joseph Tess 11/3

Gail Seeger 11/5  
Bill Muller 11/6  
Gregory Reichle 11/6  
Steve Anderson 11/8  
Nick Nadkarni 11/8  
Abraham Ourth 11/8  
George Dluhy 11/9

Molly Chaney 11/11  
Louise Gangware 11/12  
Ellen Hamilton 11/14  
Lou Heine 11/18  
Jackson Hilpp 11/19  
Tevez Odiaga 11/21  
Frank Van De Vanter 11/22

Michael Chaney 11/24  
Lloyd Bradbury 11/25  
Joshua Jansky 11/25  
Karl Jantze 11/25  
Lucia Mancini 11/26  
Annie Mitchell 11/26  
Donna Mitchell 11/29

Trustees for November are Lou Heine and Jim Sit.

## Sharing Our Gifts

---



### CARERS Corner

This November and December, to stave off the chill of winter for those in need, please fill the CARERS Trunk with hot soups, hot cereals and hot boxed foods. The CARERS Committee will distribute your contributions to food pantries in our community. (No breakable containers please.)

---

### Giving Tree

The CARERS Christmas "Giving Tree" benefits mothers and children at Constance Morris House. The tree will be set up in Fellowship Hall in November. It will be decorated with paper ornaments listing gift requests. Please take a few ornaments, and then shop for the requested items. Place unwrapped gift items under the "Giving Tree" no later than Sunday, December 11. Please take time out of that busy holiday season of yours to brighten theirs.



### RPC Garden



Hard to believe that RPC has had a vegetable garden for three years, but it has, and it has helped a lot of people! The fresh vegetables that we grow are picked up by Rev. Linda Wygant from Grace See Ministries, and she delivers them to a food bank. Linda has kept a running total of the amount of food that participating churches have grown, and to date over 20,000 pounds of fresh produce have been collected in 2016.

Our garden had another wonderful year. Best of all, we lucked out again and no deer attacked the garden. This year the Deacons tried growing potatoes. While we did harvest some potatoes, it was less than what we expected. We'll try again next year.

You may be wondering how you could help. In the short-term, please drop off hanging baskets you had this summer, and simply put them in the vegetable garden. We need to improve the soil, and next spring they will be roto-tilled into the soil. Long-term, consider growing vegetables in your own back yard when spring arrives, and make a difference in the lives of those in our community.

*Steve Teune*

---

### Help with Prison Ministry

[Companions, Journeying Together](#) is a prison ministry. You can help by sending cards to prisoners. There are packs of 10 cards each by the CARERS trunk near the church office. Please take one or more packs and follow the guidelines: Please sign your first name only; Add an appropriate message the card if you wish; Insert card in envelope but do not seal; Do not affix stamps, but provide them separately. Do not use stickers, glue, paste, or tape on the cards or envelopes (prison regulations). Do not enclose anything. **Deadline is November 6!**

---



### Christmas Cards Needed

The CARERS Committee would greatly appreciate your left-over new, unused, Christmas and holiday cards and envelopes to be saved for 2017 for the [Companions](#) prison ministry.



On Sunday, September 24, we held our annual service auction, with an Oktoberfest theme. With approximately 55 adults in attendance, we raised \$13,098. (The 2016 budget goal was \$10,000). There were 18 silent auction items and 20 live auction items. The highest bid for a single item (\$135) was for tickets for Dale and Dennis' *Tour of the Islands* Dinner. All 10 seats sold for a total of \$1,350. The highest total for an item was for Jon and Deb Jansky's *Valentine Dinner*. At \$110 per ticket the income for 16 seats was \$1,650.

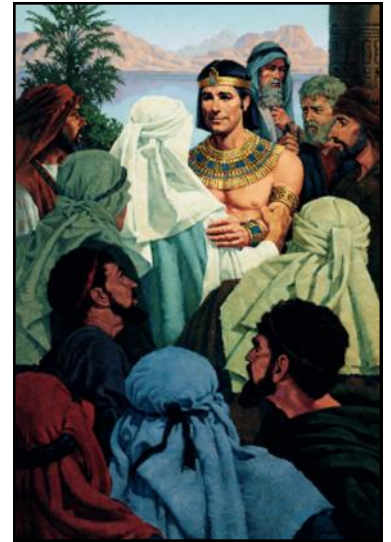


## Children

---

### Joseph in Egypt: There's More to the Story

This month in Sunday School, Joseph's story continues. We'll explore Joseph's time in Egypt and learn how God walks with him on his journey. In the Manse Kitchen, Doug Harvin will teach the kids how to make "12-Tribe Trail Mix." They'll learn how 12 brothers became united as the 12 tribes of Israel, and then discuss the role of blessings in our lives today. In the Creation Station, kids learn about famine in Joseph's time, then visit a "Wacky Farm" to learn about sustainable agriculture and famine today. In the Gym, kids will play adapted versions of familiar games with Susanne Vogel to better understand Joseph's quest for the identity of his family. In the Oasis Place, kids will create an Egyptian wall mural to depict the scenes of Joseph's life in Egypt with Nancy Dvorak. Our junior high class will spend the month of November discussing the different aspects of poverty and playing games in our library. Many thanks to all of our wonderful Sunday school volunteers who so generously contribute their time and talents to the children of RPC. We couldn't do it without each one of you!



### November's Memory Verse

Even though you intended to do harm to me, God intended it for good, in order to preserve a numerous people.

*Genesis 50:19*



### Calling All Kids: Christmas is Coming!

Mark your calendars—December 24 will be our children's Christmas Pageant. Many roles are available: narrators, actors, singers, musicians...something for everyone. Watch your mail for more information coming soon. If your child would like to participate, please contact Susan Zander at [susan@rpcusa.org](mailto:susan@rpcusa.org). There will be a mandatory dress rehearsal after Worship on Sunday, December 18, followed by a Christmas party in the Social Hall.



### Girls Group

In October, we built birdhouses, heard about the career of an emergency room doctor, participated in Feed Our Community Day, made loans on [kiva.org](http://kiva.org) and had a bonfire night! Here's what's coming up in November:

**Tuesday November 1:** Girls Group will cook dinner after school for Tuesday Night Live at RPC.

Stay and eat with us if you'd like!

**Saturday November 12:** Christkindlmarkt at RPC. Girls will sell coffee and gift bags again this year

**Wednesday November 16:** 7:00 to 8:00 p.m. Operation Christmas Child

**Wednesday November 23:** 6:30 p.m. Outing to LaserQuest

All junior and senior high girls are invited to attend. Newcomers and those who bring them will earn a prize! Questions? Contact Tara Gregus at [tara.gregus@rpcusa.org](mailto:tara.gregus@rpcusa.org).

---

### Youth Group News

The Youth Group has been enjoying spending time together with a variety of activities (which, so far, always seem to involve food . . .) We served dinner at the Stewardship Auction to raise funds for our Mission Trips. We packed 2,592 servings of mac and cheese meals at the *Feed Our Community Day* in North Riverside. We've had good discussions about what Christians should consider when voting, and then we had a Debate Watching party at Pastor Dale's house with candidate trivia, debate bingo, and great snacks.

We're looking forward to the RPC all-ages Halloween Party and all kinds of holiday fun with both our group and our church family as Thanksgiving, Advent, and Christmas arrive. Youth Group members and parents should check their emails for regular updates to our meeting/activity schedule. If somehow you haven't been receiving our emails and would like to be added to the mailing list, please contact Lisa Aulerich-Marciniak at [lisa.aulerich@gmail.com](mailto:lisa.aulerich@gmail.com). We'd love to have you join us!

---



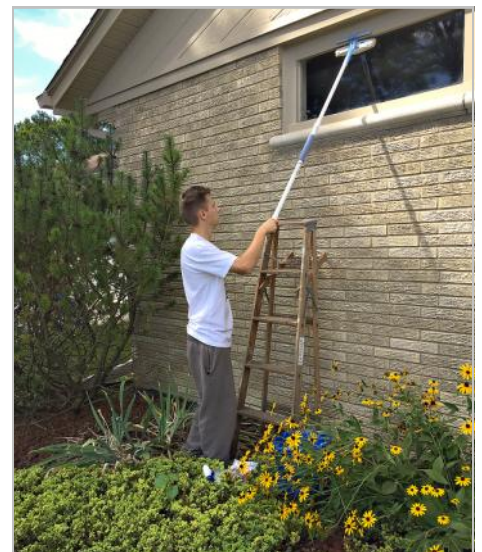
November will be another fun-filled month at preschool! The children will be very busy learning new songs for our annual Thanksgiving Sing scheduled for Thursday, November 17, in the Social Hall. Please feel free to join us and hear our fabulous preschoolers celebrate the season in song.

Riverside Foods will, once again, graciously sponsor Benefit Days at their store on November 17 and 18. A portion of all purchases during these two days benefits our Tuition Assistance Program. Check your Sunday bulletin for benefit forms if you would like to participate. Every bit helps! We are so very fortunate to be part of a community with such giving businesses!

---

### Not Too Late to Order Pecans

For years the RPC women have handled the sale of pecans to benefit Erie Neighborhood House. The funds raised support their after-school program. This year, one-pound bags of freshly harvested pecan halves will be sold for \$10, with \$1.75 benefitting Erie. Orders may be placed during coffee hour, or with Carol Sprunger. Pre-paid orders are appreciated. Checks can be made payable to Erie House. Pecans will be delivered in time for your holiday baking!

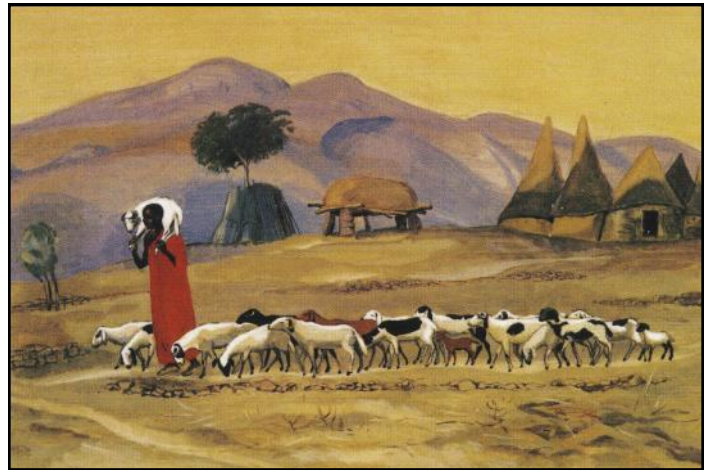


Dima Aieta washes windows with Joe Ourth. Alan and Kate Chard had purchased their window-washing services at RPC's 2015 service auction.



## Presbyterian Women Bible Study

**Who is Jesus?** *What a Difference a Lens Makes*, by Judy Yates Siker, with Suggestions for Leaders by Patricia Lynn Miller. Please join us for our next gathering on Wednesday, **November 30**, 10:00 a.m. in the RPC Social Hall. All women are welcome. Coffee is served.



The Good Shepherd, by Benedite de la Ronciere, 1973, Cameroon

**Lesson 4:** According to John

**Background Scripture:** Gospel of John (*John 1; 9; 10*)

**Key Scripture:** *John 9:1-7*

**Key Idea:** Jesus and God are one.

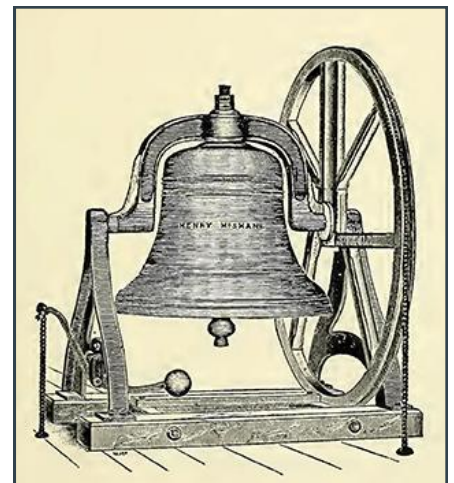
**Lesson Leader:** Sylvia Schade. Sylvia suggests looking over the worksheet on pages 96-97.

In Lesson 3, we saw how Luke presents Jesus to us as the prophet of God, a prophet who perseveres in his ministry in the face of rejection. We saw how Luke used his writings, the Gospel of Luke and the Acts of the Apostles, to narrate the story of how this persistent prophet, Jesus, gathers followers who ultimately carry on the message of the good news into the birth of the church. In this fourth Gospel we will see a very different Jesus. It is here, in fact, that we begin to see that Jesus and God are one.

## Ringin' Since 1885

Frank Gangware was ringin' the church bell enthusiastically on a beautiful fall morning when the rope went slack. Outside, Beverly Aieta walked toward the church and saw an object about the size of a man's arm fly from the belfry toward parishioners passing below. Fortunately, the object, a piece of the oak wheel used to swing the bell, did not hit anyone. A quick call to Trustee Jon Jansky reassured everyone that there was no danger that the bell itself would fall. Jon soon had the 4 ½ - foot diameter wheel rebuilt, now coated with fiberglass to protect it from the weather.

RPC's bell is usually taken for granted, and few people have seen the bell up close. As inscribed on the bell, it was cast by Henry McShane & Co. in Baltimore, Maryland in 1885. The foundry opened in 1856 and was operated by McShane and family until 1935, when the company was sold to William Parker. His descendents still manufacture bells using traditional techniques, although the company is now located in Glen Burnie, Maryland. The firm has produced over 300,000 bells for cathedrals, churches, municipal buildings and schools.



Musical bells were always cast of 80% copper & 20% tin, i.e. bronze metal. They are tuned to specific notes by removing material from the inside of the bell. Historically, the bell was swing rung to produce the "call to worship" and sounds of joy. Bells had two strikers: internal for swing ringing, and external for tolling. For tolling, the bell remained stationary and the striker hammered the bell, producing a monotone. (See left side of the image above.) This method produces the tones recognized as Funeral toll, Deprofundis (prayers for souls in purgatory) and striking the hour. RPC's bell originally had two strikers, but the toll is no longer connected. During World War II, most bell foundries were closed because the raw materials were needed for the war effort. Following the war, few foundries reopened.

### Human Scene

As we roll into November, Human Scene will continue to host the program, *Called to Community*, exploring the role of the church. To coincide with Pastor Dale's sermon series on church mission, this curriculum features several of our generation's wisest souls reflecting on the larger question of "What is the role of the Church?" This program is intended to spark rich, rewarding and fruitful discussion and reflection, and to enable RPC to move through this time of rapid transition with love and with grace.

In the latter part of November, we will return to the "Living the Questions 2" program. Each program includes a 20-minute video segment that includes conversations with leading voices of faith, digital stories illustrating aspects of an evolving faith, and concrete spiritual practices and disciplines. We intersperse the videos with moderator-led discussions on the subject matter. Please come and join us in November!

**November 6:** *A Call to Be the Body of Christ:* This will feature a video conversation with Malcolm Guite entitled "Flesh & Blood". Mr. Ayodeji Malcolm Guite is an English poet, singer-songwriter, Anglican priest, and academic. Born in Nigeria to British expatriate parents, Guite earned degrees from Cambridge and Durham universities.

**November 13:** *What is the Church Becoming:* This segment will feature two videos, one with Rachel Held Evans entitled "Creating Something New" and a second with Brian Zahnd called "Come and Die." Rachel Held Evans is an American Christian columnist, blogger and author. Her book *A Year of Biblical Womanhood* was on The New York Times' E-Book Non-fiction best-seller list. **Brian Zahnd** is a pastor and author. Brian is the lead pastor of Word of Life Church in St. Joseph, Missouri. His latest book is *Water To Wine*.

**November 20:** *Living the Questions, Chapter 4: Stories of Creation.* How one perceives the creation stories is not only critical to the way one looks at the Bible, but how one understands the purpose of creation, the essence of human nature, and the attitude one takes toward the environment in which we live.

**November 27:** *Living the Questions, Chapter 5: Lives of Jesus.* From divergent opinions on Jesus' "program" to the reasons for his having been killed, the many portrayals of Jesus in the gospels, in various traditions, theologies, and the arts, amount to a Jesus who lived many different lives – each of which helps us in teasing out what it means to be a disciple of this mysterious and profoundly significant phenomenon called Jesus of Nazareth.

---

### Scouts



The Cub Scouts and Boy Scouts want to thank everyone at Riverside Presbyterian Church for your support and encouragement!

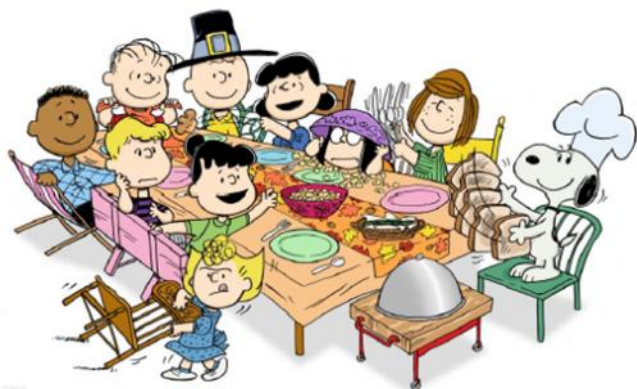
In October, 20 Boy Scouts and 7 adults from Troop 24 attended a Civil War re-enactment in Princeton. Scouts were able to meet with re-enactors including soldiers, officers, a camp doctor and blacksmiths. The scouts danced at the barn dance and watched the night-time cannon bombardment before having a personal meeting with General Thomas at the Troop campsite. Beautiful weather, great food, and good friends made for a perfect Troop 24 campout.

Pack 24 Cub Scouts set up tents around Riverside's Scout Cabin for their annual fall campout. After an afternoon of shelter building, zip-lining, and hiking, Cub Scouts enjoyed pizza and s'mores, with a campfire program of skits and flag retirement presented by Troop 24 Boy Scouts.

Troop 24 will celebrate its 100<sup>th</sup> anniversary in the Spring of 2017! A celebration dinner, program and campout are being planned. Troop 24 alumni can contact Troop Committee Chair Carrie Staubus at [carriestaubus@earthlink.net](mailto:carriestaubus@earthlink.net) for more information. We are looking for old photos and scout memorabilia. Please let us know if you have any to share!

## Events & Thanks

---



### Kids Club

*RPC Fellowship Events for Kids*

**A Charlie Brown Thanksgiving Party**  
**Friday, November 18**  
**6:00 to 8:00 p.m.**  
**Riverside Presbyterian Church**  
**\$3 / person**

Pizza ★ Games ★ Crafts ★ Movie

**For families with kids 3-10 years**



### Christkindlmarkt

RPC's Christkindlmarkt is coming soon! Saturday, November 12, from 9:00 to 3:00. Please respond to the [Sign-Up Genius](#) if you are able to help with any of the volunteer slots that are posted. And just as importantly, please save the date, and attend. Bring friends. Come for brunch and lunch from Mrs. Claus's Café and to shop from our vendors and Ten Thousand Villages.



**Thank You!**

Dear Deacons,  
Somewhere in the Southwest Suburbs, an older adult is asking for help. Because of you, a caring PeopleCare volunteer can answer. Thank you so much for donating \$500 to the PeopleCare mission. Your generosity and your support are truly at the heart of all we do.

Nearly 4,000 times, each and every year, you make all the difference in the world for older adults in need. Your kind contribution means that PeopleCare can face it down armed with car keys ...their telephone ... or kind word.  
You make it possible for us to touch people's lives ...and we will continue to work so that "no older persons in the last third of life will feel abandoned and will be able to live out their life in the most productive way possible."

We welcome the chance to answer any questions you might have. Please contact us anytime at 708-442-1223 or visit [www.peoplecareinc.org](http://www.peoplecareinc.org)

All of us here at PeopleCare really appreciate your support. Thank you again for giving vulnerable older adults a place to turn for assistance.

Sincerely  
Bruce Jablonski  
Executive Director

**From: Elmhurst American  
Legion Auxiliary Post # 187**

We cannot thank you enough for your thoughtful donations towards the packages we mail to our military. We enclose a letter with each package, letting our service members know that donations come from individuals, community groups and churches.


Thank you again.

Respectfully,  
Beth Daniels  
Member of the Packages  
for our Military Committee

Please check  
the Website for  
the most recent  
calendar  
updates!



# November 2016

Sun	Mon	Tue	Wed	Thu	Fri	Sat
		1 6:30a Men's Forum 6p TNL! 7p Deacons Mtg	2 <i>Office Closed</i> 4:15p Ringers & Singers 6:30p Bell Choir 7:30p Chancel Choir	3 6:30a Women's Forum	4	5
6 8:45a Confirmation Class 9a Sunday School 10a Worship 11a Coffee Fellowship 11a Open Gym for kids 11:15a Human Scene 2p Cantata Worship	7 5:15p Volleyball	8 6:30a Men's Forum 6p TNL! 7p Stewardship Comm Mtg 7p CCY Mtg 7p Youth Group Party 	9 <i>Office Closed</i> 4:15p Ringers & Singers 6:30p Bell Choir 7:30p Chancel Choir	10 6:30a Women's Forum	11	12 Christkindlmarkt 9a-3p 
13 8:45a Confirmation Class 9a Sunday School 10a Worship 11a Coffee Fellowship 11:15a Human Scene	14 5:15p Volleyball 7p Fellowship Comm Mtg 7p Finance Comm Mtg 7:30p Trustees Mtg	15 6:30a Men's Forum	16 <i>Office Closed</i> 4:15p Ringers & Singers 6:30p Bell Choir 7:30p Chancel Choir 7:30p Session Mtg	17 6:30a Women's Forum	18 10aCARER S Comm. Mtg 6p Kids' Thanksgiving Party	19
20 8:45a Confirmation Class 9a Sunday School 10a Worship 11a Coffee Fellowship 11:15a Human Scene 2p Scottish Home Worship <b>Vision</b> Deadline	21 5:15p Volleyball	22 6:30a Men's Forum	23 <i>Office Closed</i>	24 6:30a Women's Forum 	25	26
27 9a Sunday School 10a Worship 11a Coffee Fellowship 11:15a Human Scene	28 5:15p Volleyball	29 6:30a Men's Forum	30 <i>Office Closed</i> 4:15p Ringers & Singers 6:30p Bell Choir 7:30p Chancel Choir			

**Messiah 2016 will be held on Sunday, December 11, at 4:00 p.m. with a Wassail Bowl Reception to follow.**

**RIVERSIDE  
PRESBYTERIAN  
CHURCH**

116 Barrypoint Road  
Riverside, Illinois  
60546

Phone: 708-447-1520  
Fax: 708-447-1525  
Website: [www.rpcusa.org](http://www.rpcusa.org)

**"Where there is no vision, the people perish." — Proverbs 29:18**

Place mailing label here

**Riverside Presbyterian Church**

<b>Pastor:</b>	Dale Jackson <a href="mailto:dale.jackson@rpcusa.org">dale.jackson@rpcusa.org</a>
<b>Minister of Music:</b>	Dr. Sally Sloane <a href="mailto:sally.sloane@rpcusa.org">sally.sloane@rpcusa.org</a>
<b>Director of Children's Education</b>	Susan Zander <a href="mailto:susan.zander@rpcusa.org">susan.zander@rpcusa.org</a>
<b>Office Managers:</b>	Linda Hutcheson Donna Jones <a href="mailto:rpcoffice@rpcusa.org">rpcoffice@rpcusa.org</a>
<b>Girls Group Advisor:</b>	Tara Gregus <a href="mailto:tara.gregus@rpcusa.org">tara.gregus@rpcusa.org</a>
<b>Preschool Director:</b>	Susan Lisle <a href="mailto:rpcpreschool@sbcglobal.net">rpcpreschool@sbcglobal.net</a>
<b>Custodian:</b>	Krzysztof Gieron
<b>Clerk of Session:</b>	Mary Ann Sadilek <a href="mailto:MASDS@aol.com">MASDS@aol.com</a>
<b>Deacons Moderator:</b>	David Harper <a href="mailto:droyh21@netzero.net">droyh21@netzero.net</a>
<b>Trustees President:</b>	Jon Jansky
<b>Treasurer:</b>	Ellen Hamilton <a href="mailto:ellen.hamilton@rpcusa.org">ellen.hamilton@rpcusa.org</a>
<b>Asst. Treasurer:</b>	George Dluhy
<b>Archivist:</b>	Caroline Tecson
<b>Wedding Coordinator:</b>	Donna Ulrich
<b>Director of Music Emerita:</b>	Mary Ann Sadilek
<b>Organist Emerita:</b>	Arline Robbins



Riverside Presbyterian  
Church is a congregation of  
the Presbytery of Chicago  
(312) 243-8300. Presbyterian  
Church (U.S.A)



More information about the  
ministry and mission of Riverside  
Presbyterian Church is available  
by contacting any member of our  
church staff and by visiting our  
website: [www.rpcusa.org](http://www.rpcusa.org)

**Vision Editor/Webmaster:**  
Nancy Hopkins  
[nancy.hopkins@rpcusa.org](mailto:nancy.hopkins@rpcusa.org)